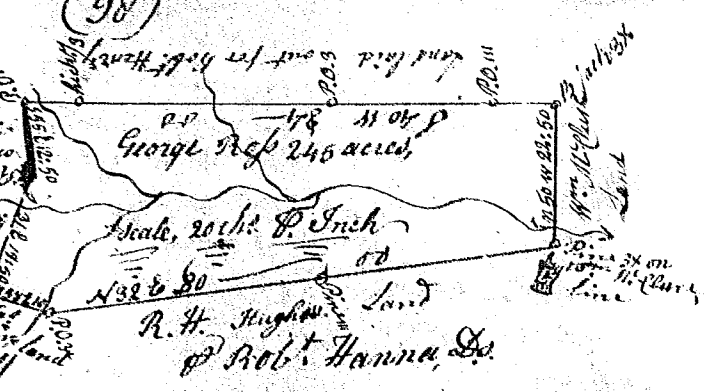
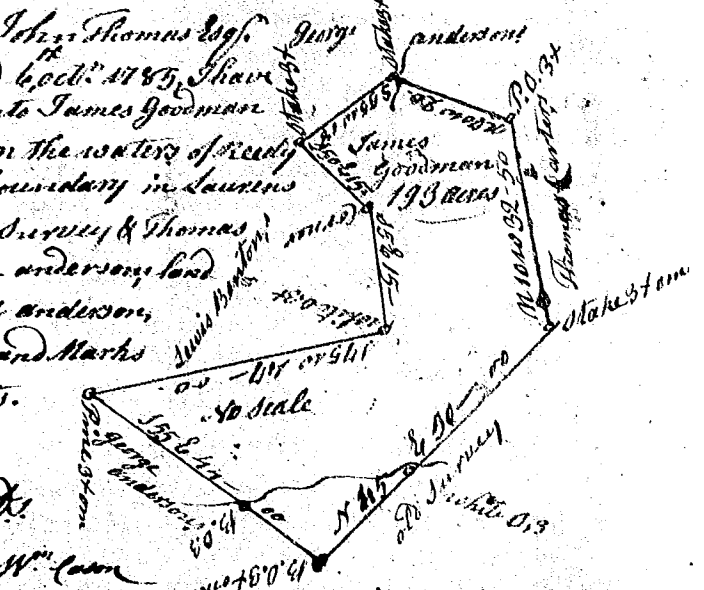


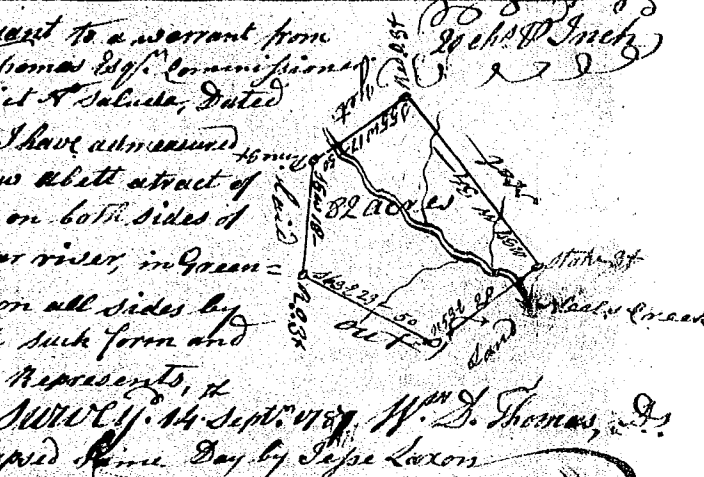
(98)  
 State of Carolina Pursuant to a warrant from John Thomas Esq. Commissioner of Locations in the District of Saluda, dated 15th Sept. 1787, I have admeasured and laid out unto George Rogg a tract of 245 acres of land, on a small branch of Sionce river in Laurens County, having such shape and marks, bearings & boundings as the above Plat represents, Surveyed 24th July 1788. Recorded 20th March 1789, D. P. Self



Pursuant to a warrant from John Thomas Esq. Commissioner of Locations in the District of Saluda, dated 16th Oct. 1787, I have admeasured and laid out unto James Goodman a tract of 193 acres of land, on the waters of Sionce river below the Indian boundary in Laurens County, bounding N.E. on old survey & Thomas Carters land, N.W. on George Andersons land, S.W. on Lewis Benton & said Anderson, and hath such shape form and marks as the above Plat represents. Certified 20th Febry 1789. William Caldwell Esq. Recorded 25th Dec. 1789, D. P. Self



State of Carolina Pursuant to a warrant from John Thomas Esq. Commissioner of Locations in the District of Saluda, dated the 15th September 1787, I have admeasured and laid out unto Matthew Abett a tract of eighty two acres of land, on both sides of Neelys Creek of South Tugger river, in Greenville County, bounded on all sides by vacant land, and hath such form and marks as the above Plat represents, Surveyed 14th Sept. 1787. Recorded 11th Dec. 1789, Slashed same day by Jesse Laxon



South Carolina Pursuant to a warrant from John Thomas Esq. Commissioner of Locations in the District of Saluda, dated 12th Nov. 1789, I have admeasured & laid out unto Henry Bramlet a tract of 200 acres of land, in the District of Saluda, on the branches of Beaverdam Creek waters of Ennore river, bounding E. & S. by John Travis land, all other sides by vacant land, and hath such shape and marks as the above Plat represents, Surveyed 18th Nov. 1789. Recorded 24th Dec. 1789, D. P. Self

